



ANNOUNCEMENT

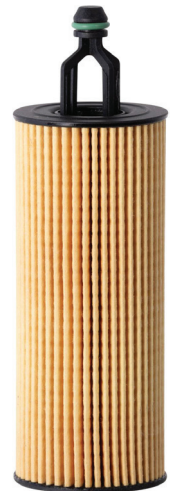
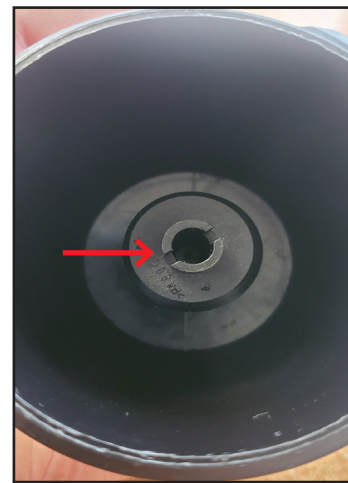
#402

Chrysler Oil Filter Replacement Notice

Oil Filter Housing Cap	Associated Oil Filter
OE# 68191350AA	100010 / 2100010

It has been identified that over time, the pressure relief valve located in the housing cap (Chrysler OE Cap P/N: 68191350AA) can detach from the housing cap and migrate up the center tube of NAPA oil filter 100010 / 2100010 (more common in cold weather conditions).

ENHANCED DESIGN: To prevent this failure mode, NAPA redesigned the filter with integrated rails in the center core that will capture the relief valve poppet if relief valve failure occurs. The valve will only be able to move a quarter of the way up the center core, ensuring it does not reach the top where it could obstruct oil flow. This prevents engine failure due to oil starvation.



RECOMMENDATIONS:

1. Inspection & Maintenance:

- Technicians and vehicle owners should inspect the oil filter housing cap during routine oil changes.
- If any signs of damage, cracking, or a loose relief valve are detected, replace the housing cap immediately.
- Service centers should inform customers of the potential issue and offer HOUSING CAP replacement options.

2. Preventative Actions: Regular Housing Cap Replacement

- It is highly recommended to replace the housing cap every 3–4 oil changes or every 30,000 miles to prevent failure.
- Always use a high-quality OEM equivalent replacement part.

3. Proper Removal:

- Pull the oil filter housing cap straight from the filter. Do not rock the filter back and forth to release the housing cap as damage can be caused to the housing cap bypass valve. In these cases, the housing cap would need to be replaced.
- When uninstalled from the housing cap in a harsh manner, the bypass valve can be damaged and/ or broken.

4. Proper Installation:

- Ensure the oil filter housing cap is tightened to the manufacturer's specified torque value.
- Over-tightening can cause cracks and potential failure of the housing cap.

This is not a defective oil filter. It is a malfunction of the oil filter housing cap. Carefully inspect the housing cap before installing a new oil filter. If the by-pass valve is missing, broken or damaged, replace the housing cap. By implementing these preventive measures and utilizing the enhanced filter design, the risk of oil starvation and subsequent engine failure can be significantly reduced.